

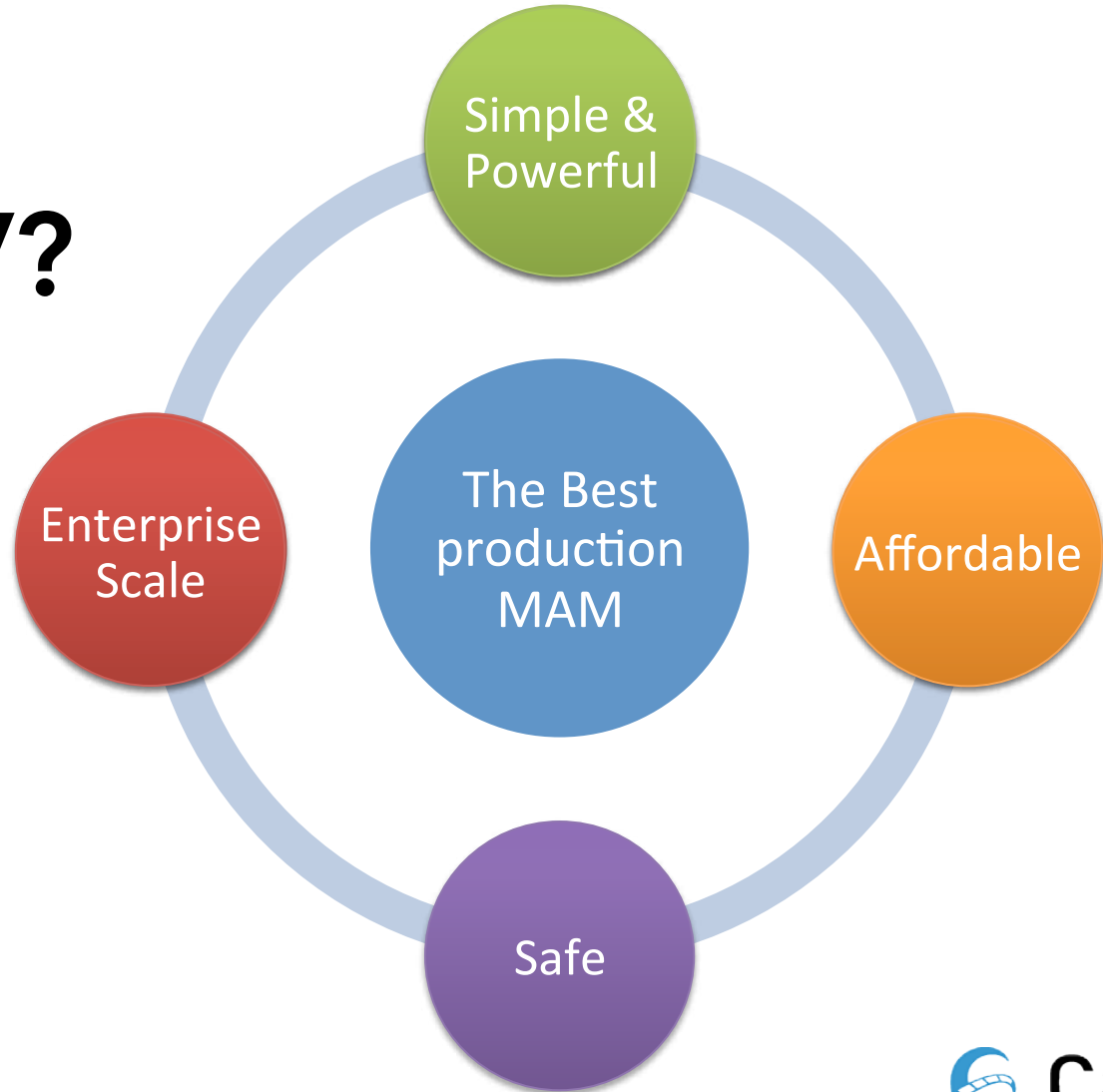


# CatDV Enterprise Scale

***"The \$1m MAM is history:  
make a wiser MAM  
investment!"***

Dave Clack – CEO, Square Box

# Why CatDV?



# CatDV: Enterprise Scale

- Worker 6
- Server 7
- CatDV Professional Services
- = Infinite Scale & Resilience

# Agenda

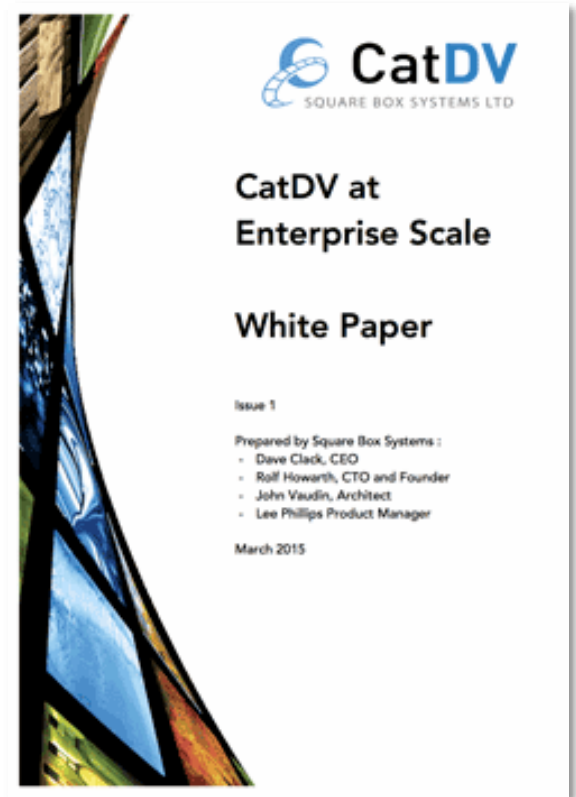
- What is enterprise software ?
- How does CatDV stack up ?

# What is Enterprise Software

- Have many powerful features that continually advance and improve.
- Be robust and resilient.
- Be well supported.
- Be provided by a stable and reliable organisation.
- Scale to accommodate:
  - Large numbers of users.
  - Large volumes of information.
- Provides strong reporting capabilities
- Support distributed deployment.
- Support enterprise directory / naming services.
- Integrate with a wide range of third party products.
- Be secure.
- Have well documented APIs and extension mechanisms to allow the product to be customised to individual customer's requirements.
- Support a range of users with different needs.
- Work across many different devices.
- Provide business automation.
- Support a wide range of flexible deployment options:
  - On premise
  - Data centre
  - Cloud
- Offer centralized management.
- Provide easy to find clear and transparent documentation.

# White Paper

- Discusses each enterprise requirement
- How CatDV fills the need



# What is Enterprise Software

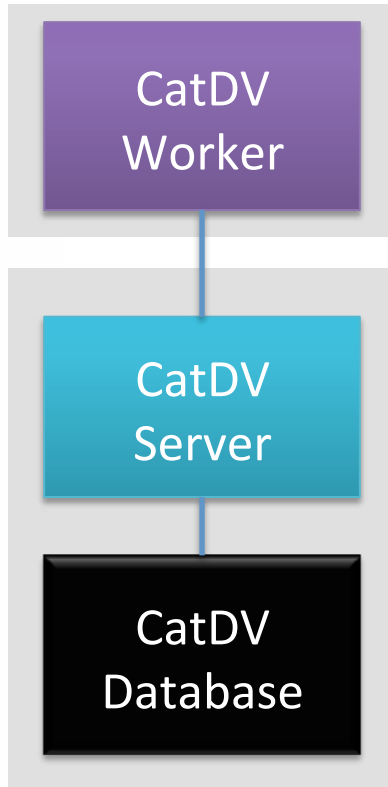
- ✓ Have many powerful features that continually advance and improve.
- ✓ Be robust and resilient.
- ✓ Be well supported.
- ✓ Be provided by a stable and reliable organisation.
- ✓ Scale to accommodate:
  - ✓ Large numbers of users.
  - ✓ Large volumes of information.
- ✓ Provides strong reporting capabilities
- ✓ Support distributed deployment.
- ✓ Support enterprise directory / naming services.
- ✓ Integrate with a wide range of third party products.
- ✓ Be secure.
- ✓ Have well documented APIs and extension mechanisms to allow the product to be customised to individual customer's requirements.
- ✓ Support a range of users with different needs.
- ✓ Work across many different devices.
- ✓ Provide business automation.
- ✓ Support a wide range of flexible deployment options:
  - ✓ On premise
  - ✓ Data centre
  - ✓ Cloud
- ✓ Offer centralized management.
- ✓ Provide easy to find clear and transparent documentation.

# Key Points

- ① Scale
  - Assets
  - Users
- ② Resilience
- ③ Multi-Site
- ④ Integration & Extensibility
- ⑤ Reporting & Analytics
- ⑥ Security
- ⑦ Flexible Deployment
- ⑧ Vendor Safety & Customer Service



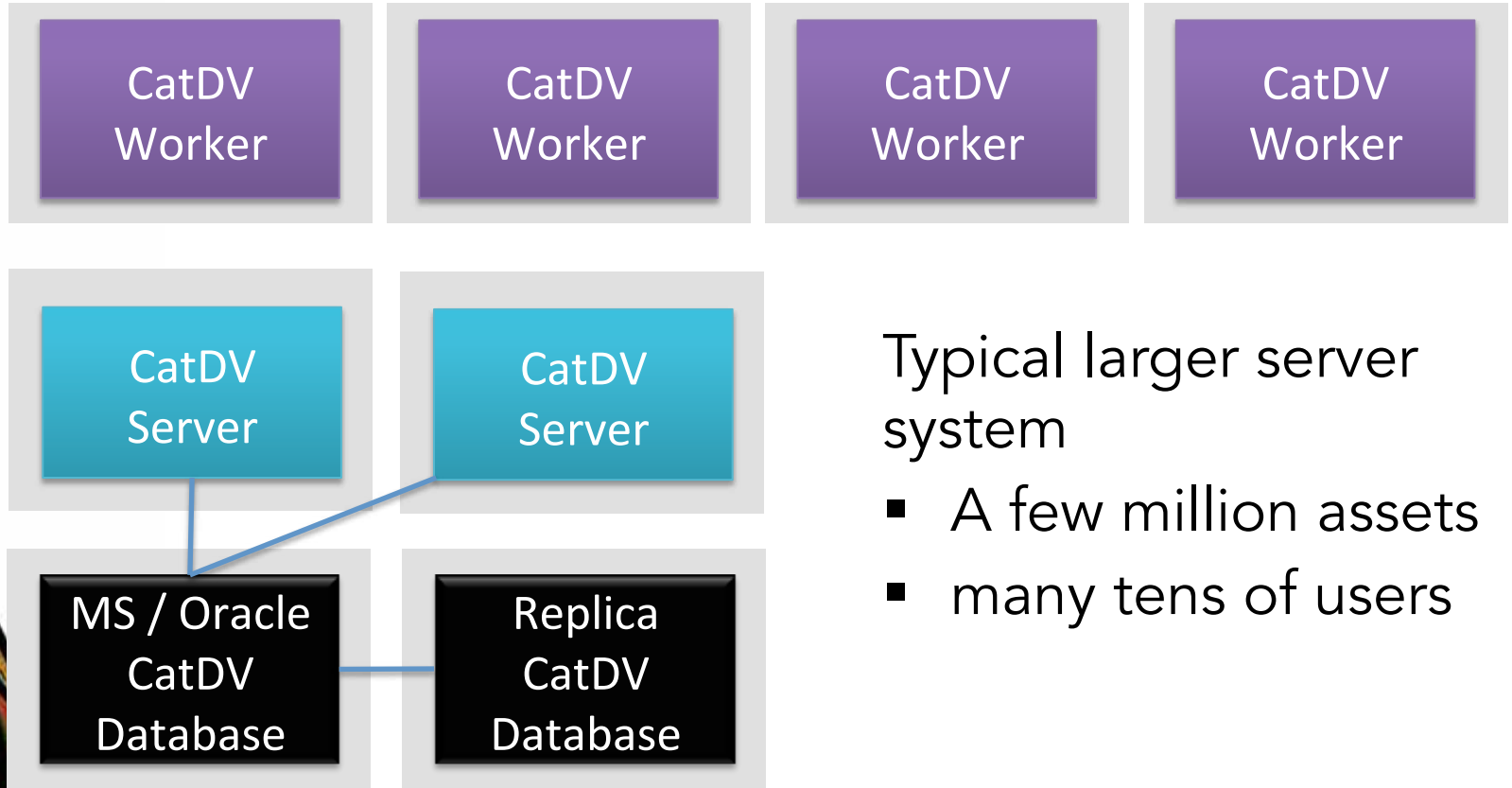
# 1. Scale: Small System



Typical smaller server system

- A few hundred thousand assets
- Tens of users

# 1. Scale: Larger System



Typical larger server system

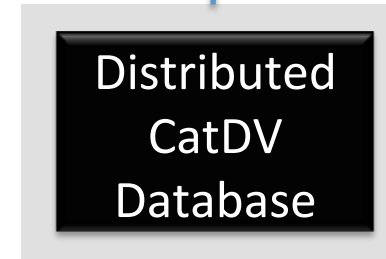
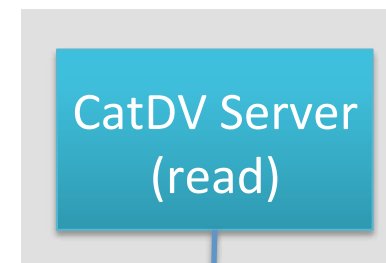
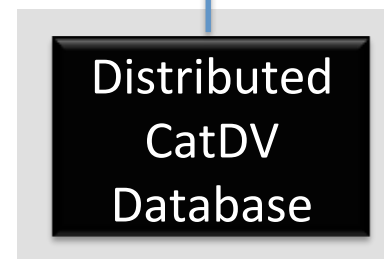
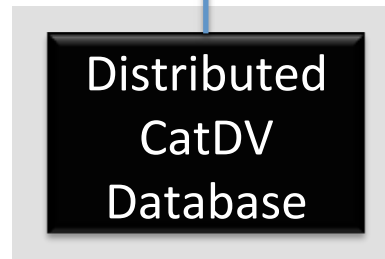
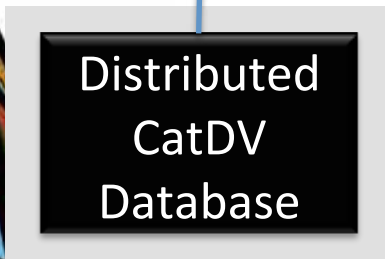
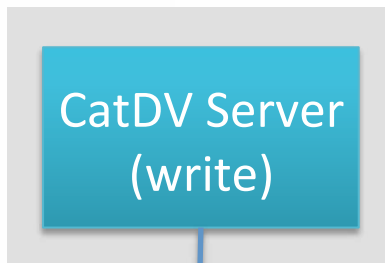
- A few million assets
- many tens of users

# 1. Scale: Ultimate Scale



Ultimate scale system

- many million assets
- Hundreds of users



# 1. Scale: Asset and Users

Ultimate Scale ... plus

- add database clustering
- shard the system

# 2. Resilience

Build up ...

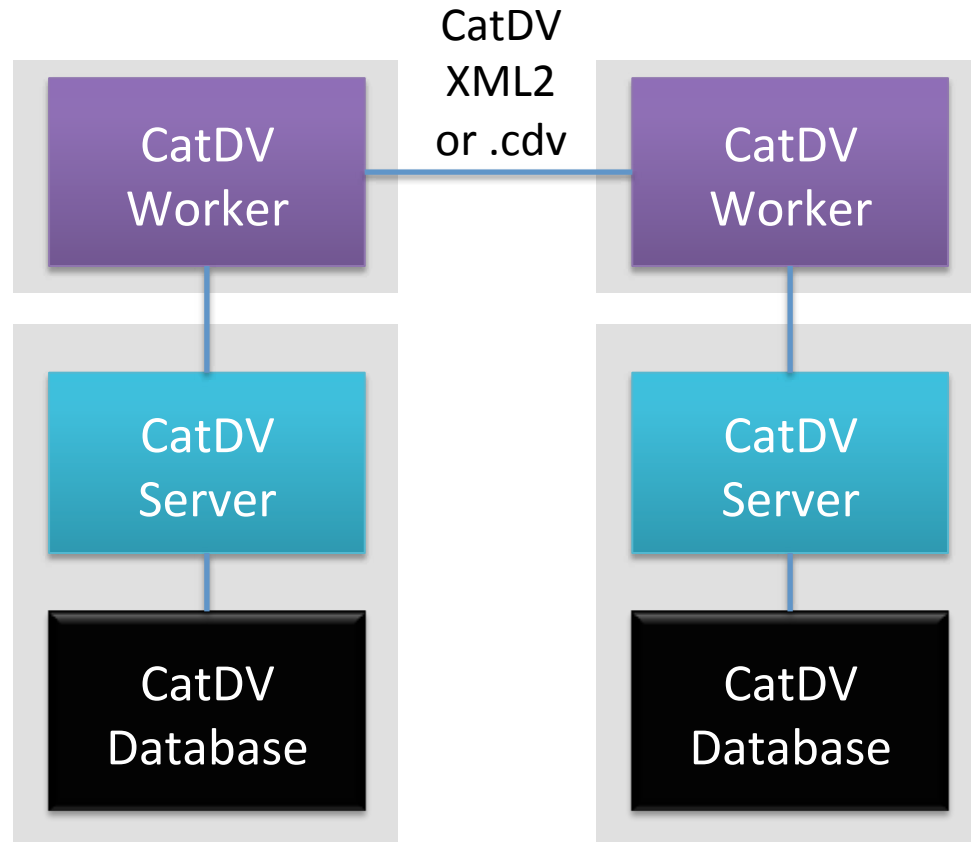
- Automated backups
- Database replication
- Multiple CatDV servers
- ... workers
- ... databases

# 3. Multi-Site

Worker 6 enables multi-site

Workflow designers choose how to replicate changes

- Master – Slave
- Merge Updates
- etc



# 4. Integration & Extensibility

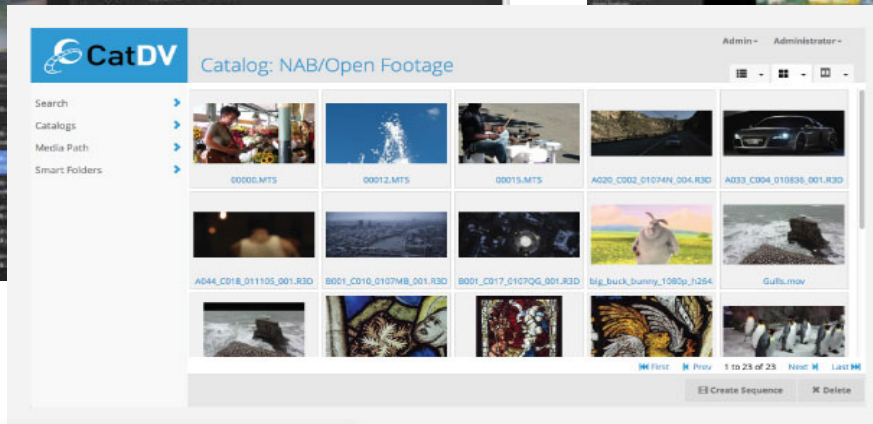
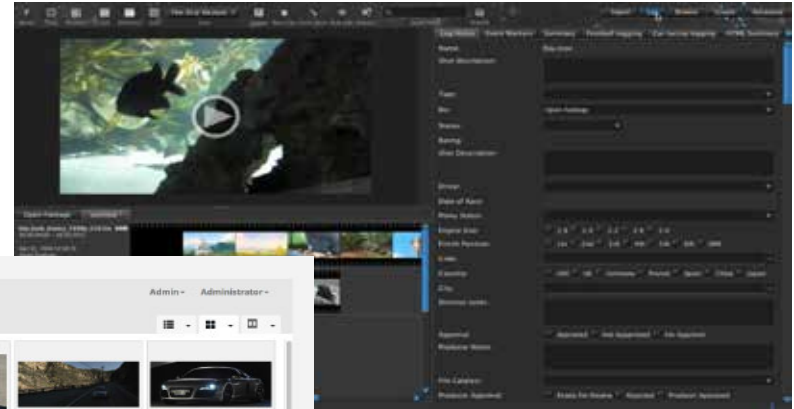
## Open CatDV APIs

- Extend CatDV: Server Plug In API
- Use CatDV
  - REST API
  - CLI
  - XML – FCP, CatDV + XSLT
- Coming Soon
  - Administer CatDV

## Proven Integrations

- Xendata, Quantum, SDNA, Facilis, Cache-A, Sony ODA, ASG/Atempo, SGL, Archiware, SNS, AWS
- File Catalyst, Aspera, Youtube, Vimeo, FTP/SFTP
- Vantage, REDline, Episode etc
- All Major NLEs

# The right UX for every user





# 4. Integration & Extensibility

The Right UX for each user ...

- Desktop: Content Creators
- CatDV Web: unlock the value of assets across an organization
- CatDV with Akomi: share assets outside the organization

# 5. Reporting & Analytics

Pegasus  
CatDV  
Server

Basic activity logging in  
Enterprise Server

Enterprise  
CatDV  
Server

Pegasus Server (coming  
soon) has additional  
reporting & logging

Workgroup  
CatDV  
Server

# 6. Security

- Secure by design
  - Production groups control who can access what
  - No need for write access to original media
  - Watermark capability
- Strong access control
  - Open Directory and Active Directory support
- Security by Separation
  - Partial deployment in DMZ

# 7. Flexible Deployment

- Stand Alone – unique !
- On Premise
- Data Centre
- Private Cloud
- Public Cloud

# 8. Vendor Safety & Customer Service

- Reliable Software
- Continued Product Investment
- Perpetual Licenses
- Open and transparent
- Pro' Services can completely customize
- Track Record - >14 years, 1000s of customers
- Strong Support: US and UK

# Key Points

- ① Scale
  - Assets
  - Users
- ② Resilience
- ③ Multi-Site
- ④ Integration & Extensibility
- ⑤ Reporting & Analytics
- ⑥ Security
- ⑦ Flexible Deployment
- ⑧ Vendor Safety & Customer Service

# Conclusion

Find out more ... contact us for White Paper: [dave@squarebox.com](mailto:dave@squarebox.com)

Get us involved early for specific, larger opportunities

## Thank you

## Q & A ?