

CatDV and BlackPearl Technical Solution Brief

Spectra BlackPearl Archive for CatDV Workflows

Spectra's BlackPearl® Deep Storage Gateway enables CatDV users to archive content forever at virtually no cost while utilizing a hybrid cloud architecture, object storage, and LTF5.

Benefits

- Direct search, preview and restore
- Transparent multi-tiering
- Simplifies the workflow
- User friendly
- Low cost

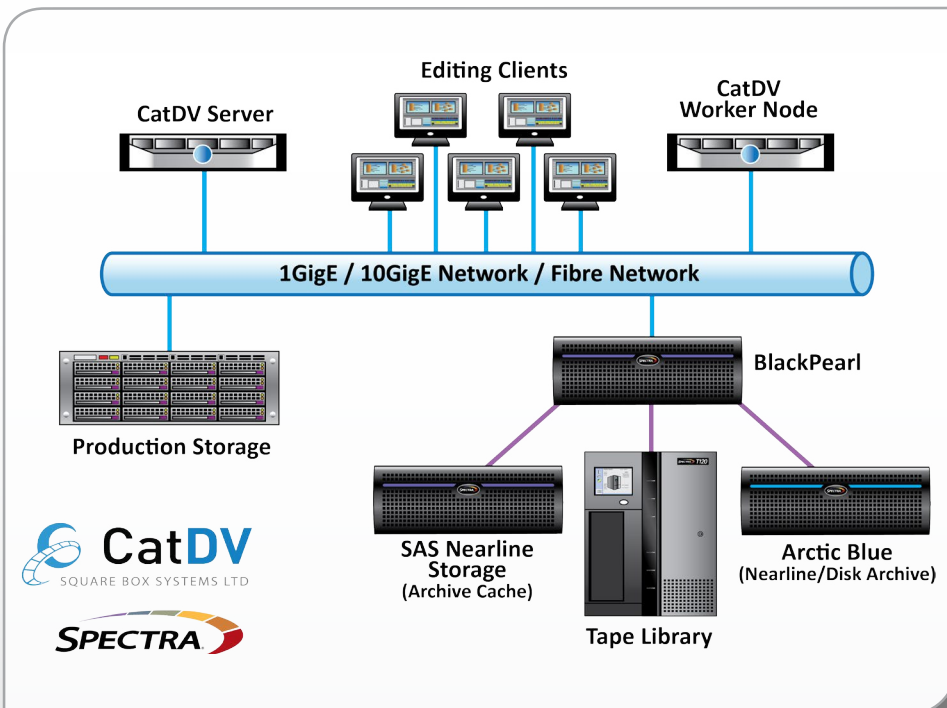
How does it work?

BlackPearl is directly integrated into CatDV with an installer that runs on the CatDV system. BlackPearl allows CatDV users to deploy an easy and affordable archive to deep storage disk and/or tape that is highly scalable.

How does BlackPearl fit into the CatDV workflow?

With the BlackPearl integration, CatDV users can directly archive original content, search, view proxies and restore video assets to BlackPearl using the CatDV Desktop Client or the CatDV Web Client.

The BlackPearl and CatDV integration adds options for users to configure, start, report status, backup (copy files to BlackPearl), restore (from BlackPearl to the original storage location), and purge (delete original content from original storage). The user can access these options via the CatDV Desktop Client and/or the CatDV Web Client.



System Features

- Enables short and long form archive all in one system
- Non-disruptive data migration*
- Automatic tape repack* (space reclamation)
- Supports LTO and Enterprise Tape Technologies
- Manage externalized tapes via BlackPearl GUI
- Data management policies (Advanced Bucket Management)
 - Data retention policies
 - Multiple copies
 - Supports SAS & SMR for nearline & archive disk
 - Remote copy

BlackPearl System Specifications

- Performance: Up to 70TB/day into archive with one BlackPearl
- Database: From 50 to 1 billion objects
- Tape library support: Spectra T50e, T120, T200, T380, T680, T950, TFinity
- Drives and media: LTO-5, LTO-6, LTO-7, TS11X0, T10000A,B,C,D

About the Solution

The CatDV and BlackPearl integration provides users with a powerful, user-friendly toolset to manage and archive assets. The integration scales to accommodate small, multi-user workgroups all the way to enterprise environments while providing a centralized location where disparate teams can collaborate. Using the fully integrated solution customers can catalog, organize, search, manage and restore archived content.

System Requirements



Basic Setup

A BlackPearl must be configured and available for network communications within the CatDV system. The BlackPearl hostname, access key, and security key must be set up for the S3 plugin. Spectra Logic CatDV S3 plugin requires .NET Framework 4.5. BlackPearl 3.0.1 or later is required.

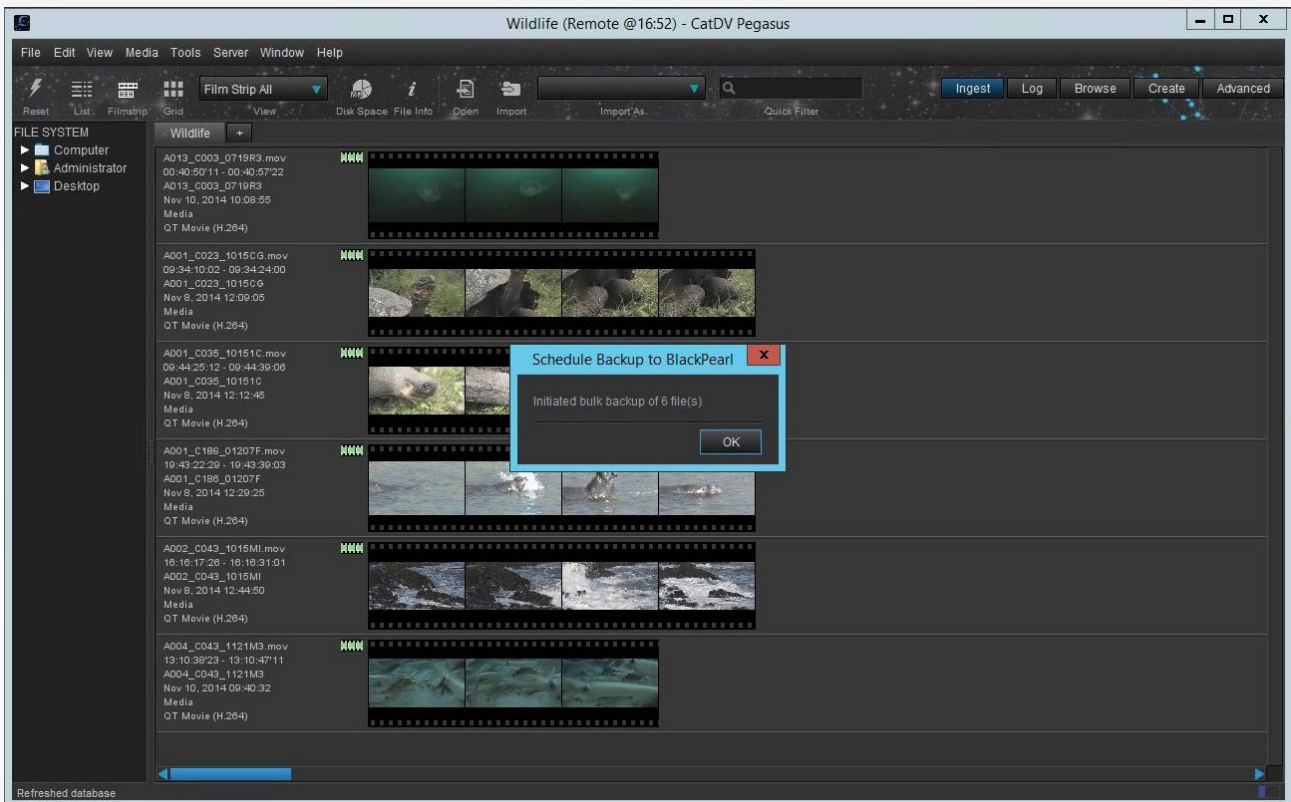


Requirements

Requires CatDV server version 7.0 and above. Worker version 5.11 or 6. Spectra Logic permanent storage target - Online Disk, ArcticBlue and/or Tape Library.

Required CatDV information:

- BlackPearl host name or IP address
- BlackPearl port
- Access ID
- Secret key
- Bucket name



Plugin

CatDV Plugin for BlackPearl is installed on a CatDV Server. Full instructions plus installation tools, and CatDV Professional Services are included with the product to assist with system setup and configuration.

Within the CatDV Desktop Client, BlackPearl archive commands are available in the 'Tools' menu when the client is logged into the server. File transfers are initiated by the schedule backup/restore commands and carried out by a separate process. It is possible to schedule backups/restores at any time, but they will not be executed until this process is running. The process is started via the "Start BlackPearl Archive Service" command.

As transfers are executed by a separate process, the client does not automatically reflect updates to a clip on completion of a transfer, the actual status is always stored accurately by the server. Use 'Server->Refresh Window' in the client to pick up any changes during/after transfer.

Spectra Logic

6285 Lookout Road • Boulder, CO • 80301 • USA
 303-449-6400 • 800-833-1132
 www.spectralogic.com • Email: sales@spectralogic.com

Square Box Systems Ltd.

Lake View House • Tournament Fields • Warwick • CV34 6RG • UK
 +44 1926 679273
 www.catdv.com • Email: sales@squarebox.com